

SONIQ

LCD/Plasma Wall Bracket Instruction

AWM1501

1. Technical parameter

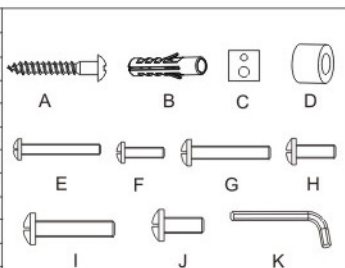
Maximum load: 40kg; Size of flat panel TV: 15" ~42" ; VESA STANDARD;
 Support wall mount dimension (WxH): from 75mmx75mm to 400x200mm;
 Adjustable angle: swing angle $\pm 90^\circ$, pitching angle $-5^\circ \sim +15^\circ$;
 Net Weight: 4.2kg ; Distance from wall: 90~500mm.

2. Part list:

Please check the parts in the package compare with the following list. Make sure all of the parts are in the package. Never use defective parts. Never replace part with different specification.

Note: Incorrect installation may cause injury!

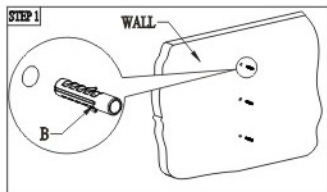
K	Inner Hexagon Spanner S=6	Standard part	1
J	M6*15	Standard part	4
I	M6*30	Standard part	4
H	M5*15	Standard part	4
G	M5*30	Standard part	4
F	M4*15	Standard part	4
E	M4*30	Standard part	4
D	plastic sleeve	Standard part	4
C	25x25 Shim	Standard part	4
B	plastic Anchor	Standard part	3
A	Self-tapping screw	Standard part	3
No.	Name of part	Material	Amount

**3. Installation and operation instructions**

Note: Please read the instructions carefully before installation!

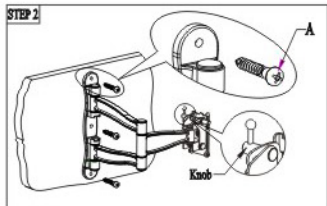
Step 1:

Use the base as a template to drill three holes of $\phi 10\text{mm}$ diameter and 50mm depth in the concrete wall. Make sure the three holes are at one vertical line. Insert three plastic anchors into the holes and make the anchors flush with the wall surface.

**Step 2:**

Screw 3 lag bolts into 3 plastic anchors through the mounting holes of the base to fix the base on the wall tightly.

Note: When installing support, the knob should be on top.

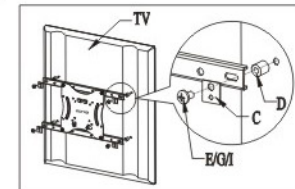
**Step 3:**

Refer to your TV manual to determine the diameter of the screw, spacer and washer necessary or choose an appropriate these accessories to the size,

height and position of the holes on our TV. Attached TV plate to the back of the TV with the hooks facing down. Using selected accessories as below detail to attach TV and once aligned tightly secure the bolts.

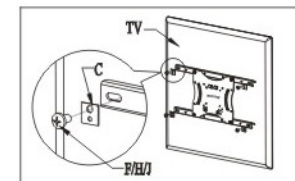
For TV with vertical back:

This TV doesn't require spacer. Attached the TV plate directly to the back of TV using screw (F/H/J), square washer (E/G/I), square washer to attach TV plate and TV together.

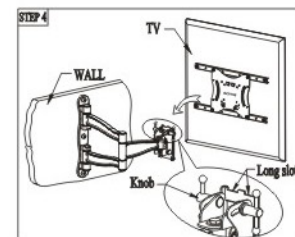


For TV with curved or recessed back:

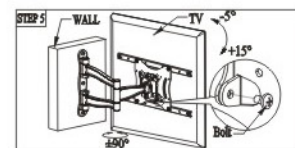
This TV may require the use of spacer (D). Install the spacers between the TV and the TV plate. And then using screw (E/G/I), square washer to attach TV plate and TV together.

**Step 4:**

Lift the TV assembled with the TV fixed plate to hang it on the two long slots in support head through two pothooks in the TV fixed plate correctly.

**Step 5:**

There are two holes in both sides of the TV fixed plate. After hanging safely, fix the TV fixed plate with the support with bolts through the holes in TV fixed plate and screw down. The TV position can be moved forwards and backwards within limits, and can also be adjusted right-and-left and up-and-down. Wind the position that has been adjusted with a spanner provided in the accessory bag and the knob on the support.

**4. Notes**

- (1) Choose the right place to install wall plate. The bracket must be installed on solid concrete wall. Make sure the wall can support 160kg weights up.
- (2) Users should check and maintain the product frequently according to the use status to ensure the flat panel TV works normally, safely and securely. Please wipe joining parts with a dry cloth frequently. Don't use it in rain or in moist environment. Please check once two months if all bolts are secure or not.