

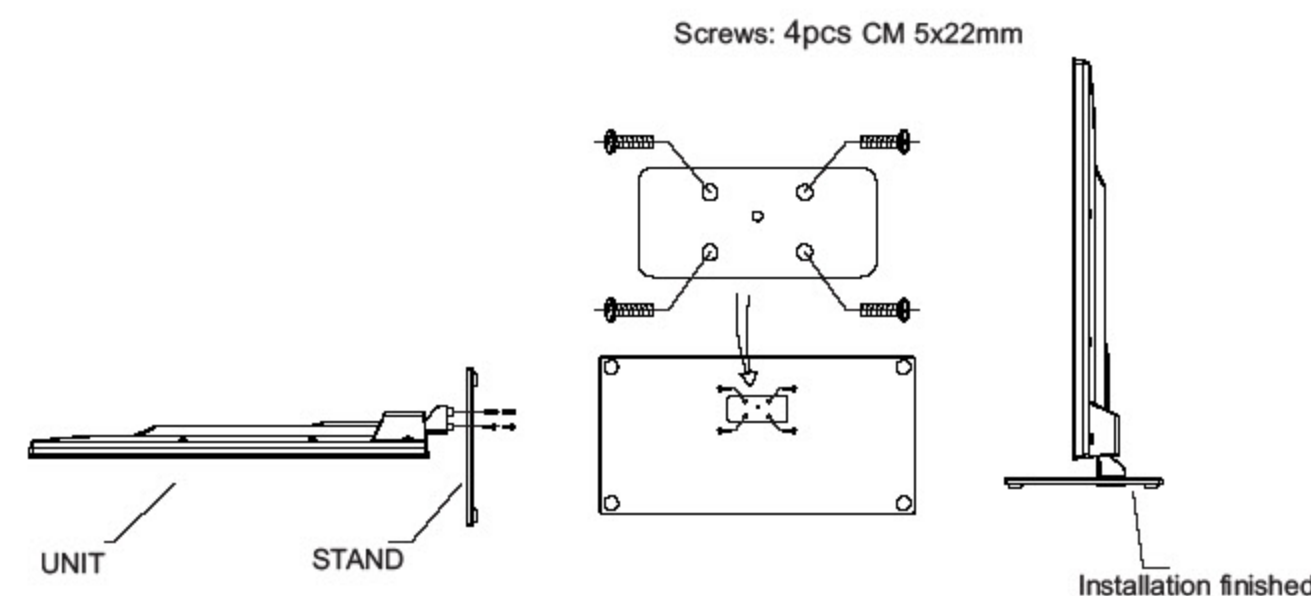
Thanks for purchasing the unit. Your unit integrates digital and analog tuner in the same unit. You can enjoy both digital and analog broadcasting under following set-up easily.

The latest news, software, utility, driver, product, manual and Q&A will be found at SONIQ website.

[Http://www.soniq.com](http://www.soniq.com)

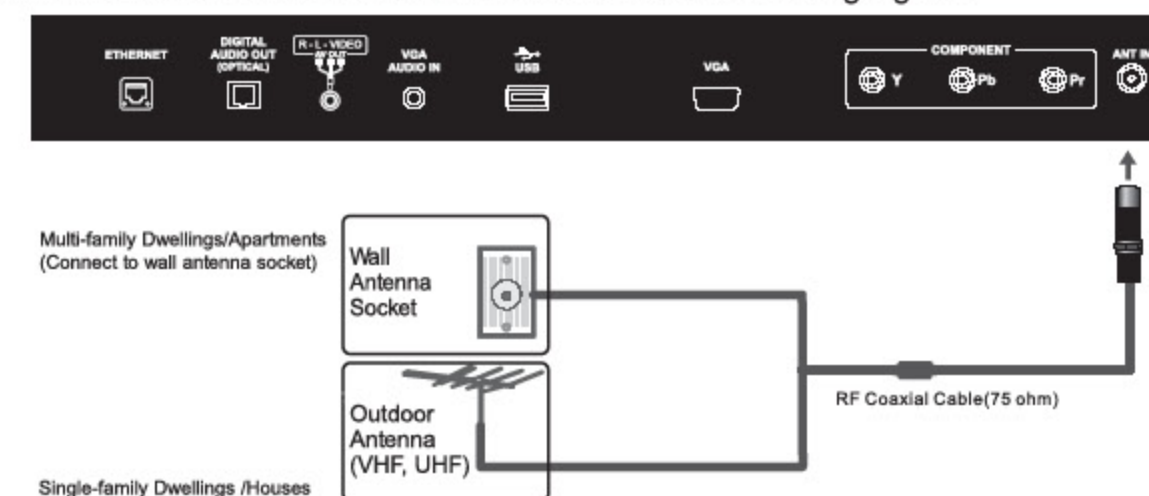
Stand Installation

Before performing work, please lay the TV on the stand to prevent it from being damaged. Fix the stand and the unit together with screws. To remove the stand, reverse instruction as above
Screws: 4pcs CM 5x22mm



Antenna Connection

Your simply connect outdoor antenna to ANT IN to receive broadcasting signals.



2

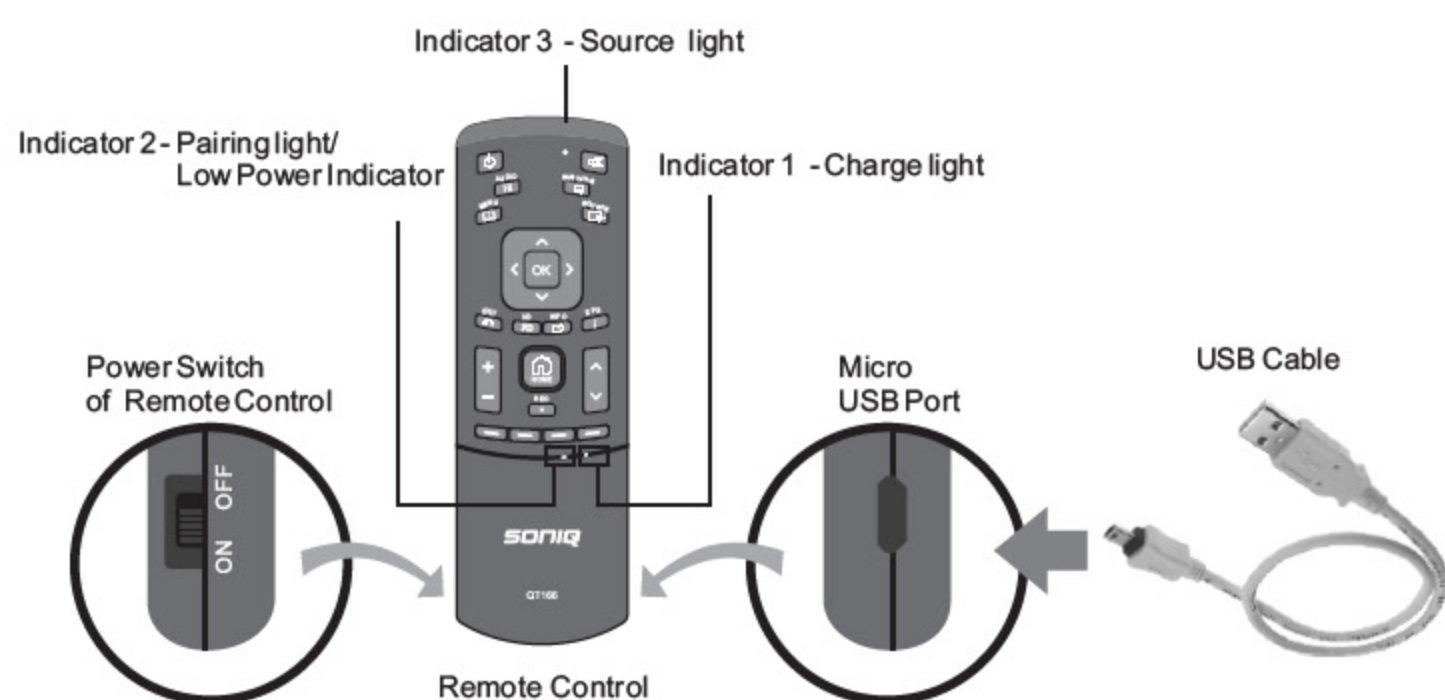
RF Remote Control pairing

The Remote Control has already been paired for the first time you use it therefore users do not need to perform this step again under normal conditions, but if it does not work with battery fully charged or if you have replaced the Remote Control before operating then follow the steps below.

1. Turn on the power at the left side of Remote Control (pairing will take effect in one minute), and hold the Remote Control within 1 meter of the unit.
2. Press and hold RF Button for 2 seconds, indicator light 3 will flash and light up together with indicator light 2.
3. Pairing will complete within 3 minutes, if indicator light 3 and 2 flashes 3 times, that means the device has been paired successfully. If indicator light lights up all the time or goes out, that means the pairing failed, and repeat the above steps for pairing.

Remote Control Function

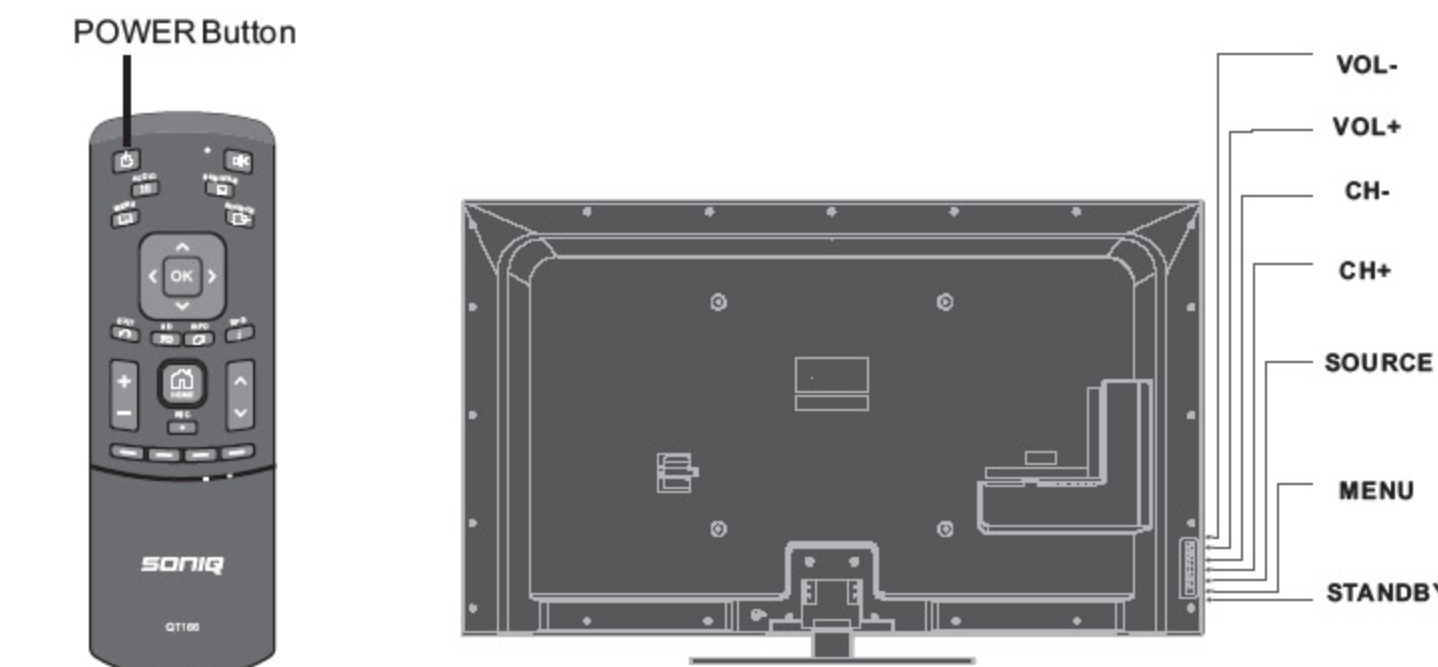
1. Turn the Power Switch ON at the left side of the Remote Control, the indicator light 3 will flash 3 times, meaning you can operate the Remote Control.
2. Press and hold any key to light up indicator light 3, the light will go out when releasing the button.
3. RF Remote Control is supplied with lithium battery. **Indicator light 2 flashing means low power**, please charge immediately.
4. Plug in USB cable (supplied with the TV) for charging, then connect to the remote control/PC/adaptor with the current of 5V/1A. Indicator light 1 lights up when charging is required. Indicator light 1 will go out when fully charged.



3

Power On the Unit

Connect the Power Cord to the Power Outlet. Press the POWER Button on the Remote Control or STANDBY Button on the unit to turn on the TV.



Remote Control

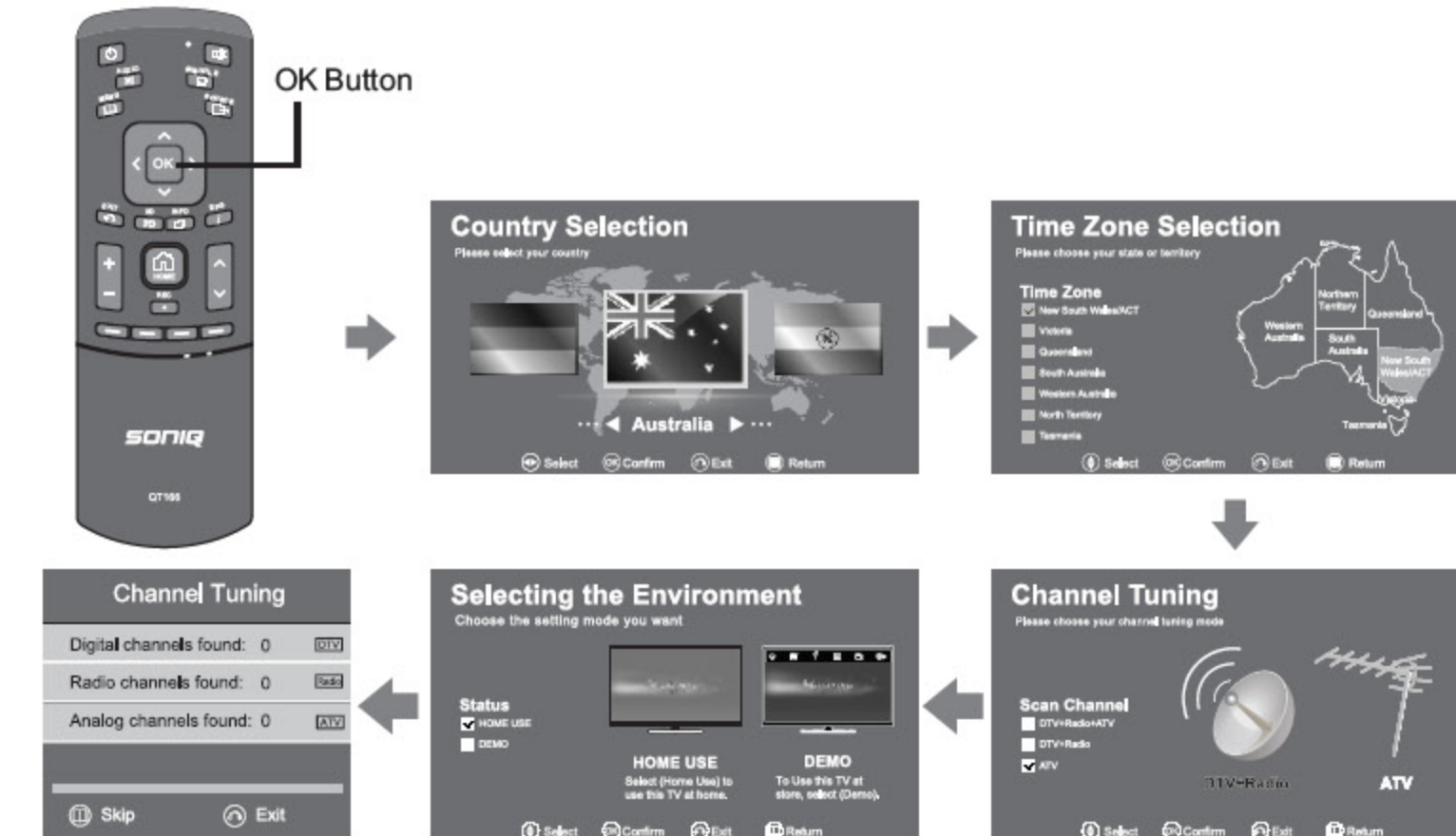
TV Auto Scan

You can perform Analog TV Auto Search Program at below methods.

Method 1:

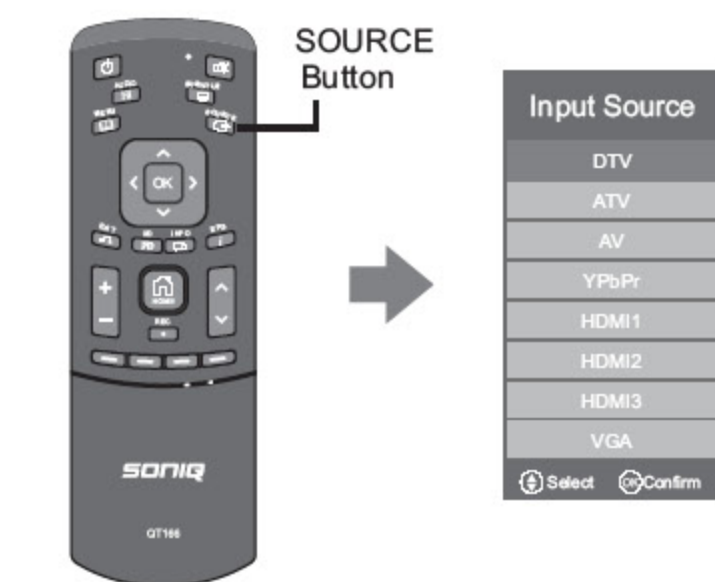
1. Initial Setup window will be appeared when you first start to use.
2. Press ◀/▶ button to select the Country, then press OK Button to proceed.
3. Press ▲/▼ button to select your location, and then press OK button to proceed.
4. Use ▲/▼ button to select the tuning type, press OK for channel tuning.
5. Press ▲/▼ button to select the setting mode you want, then press OK to start channel tuning.

4



Method 2:

Press SOURCE Button to display the Source list
Press ▲/▼ button to select ATV and
Press OK button to confirm.

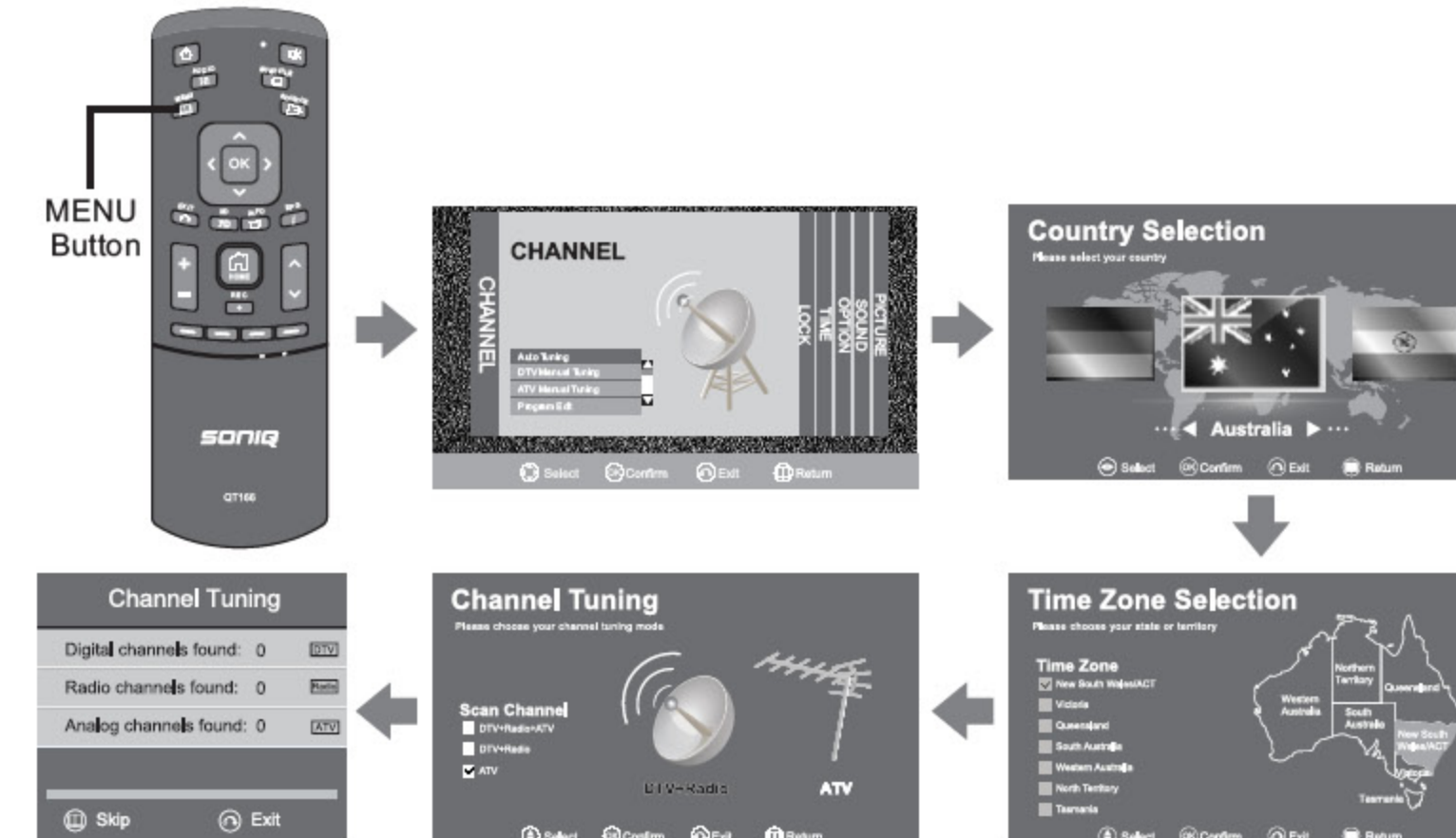


Press MENU Button to enter the CHANNEL page as follows:

1. Auto Tuning will be highlighted by entering this screen. Press to continue.
2. Press ◀/▶ button to select country, press OK Button to continue.
3. Use ▲/▼ button to select your location, then press OK button to enter the next step.

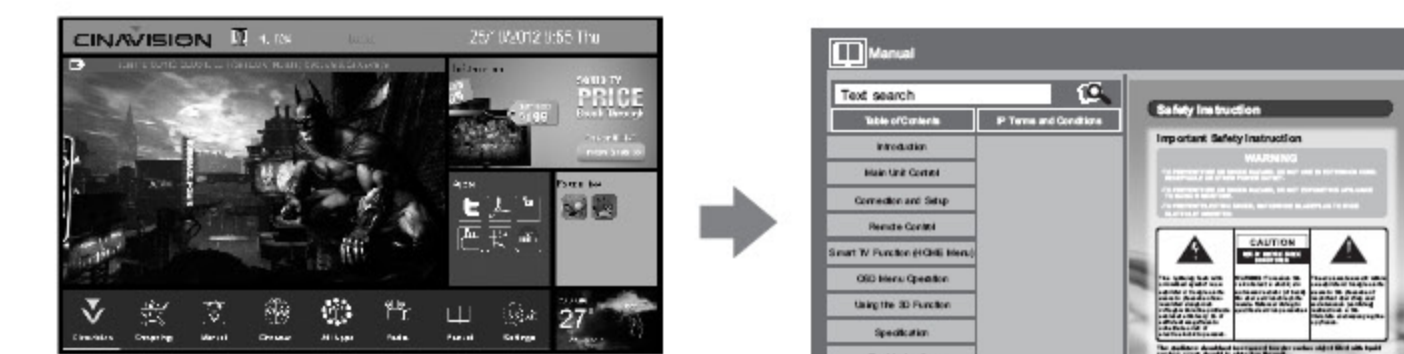
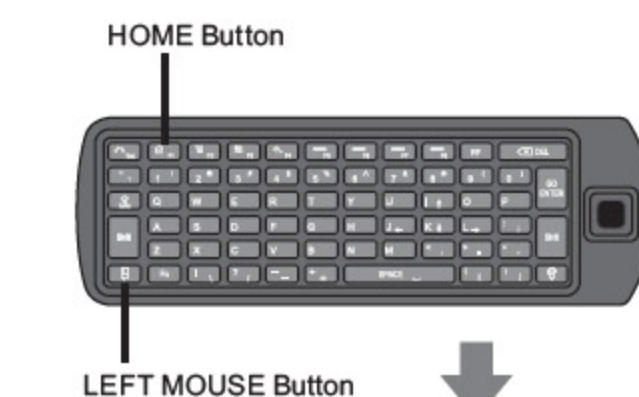
5

4. Press ▲/▼ button to select tuning type, press OK to channel tuning.
5. Press OK to start auto search.



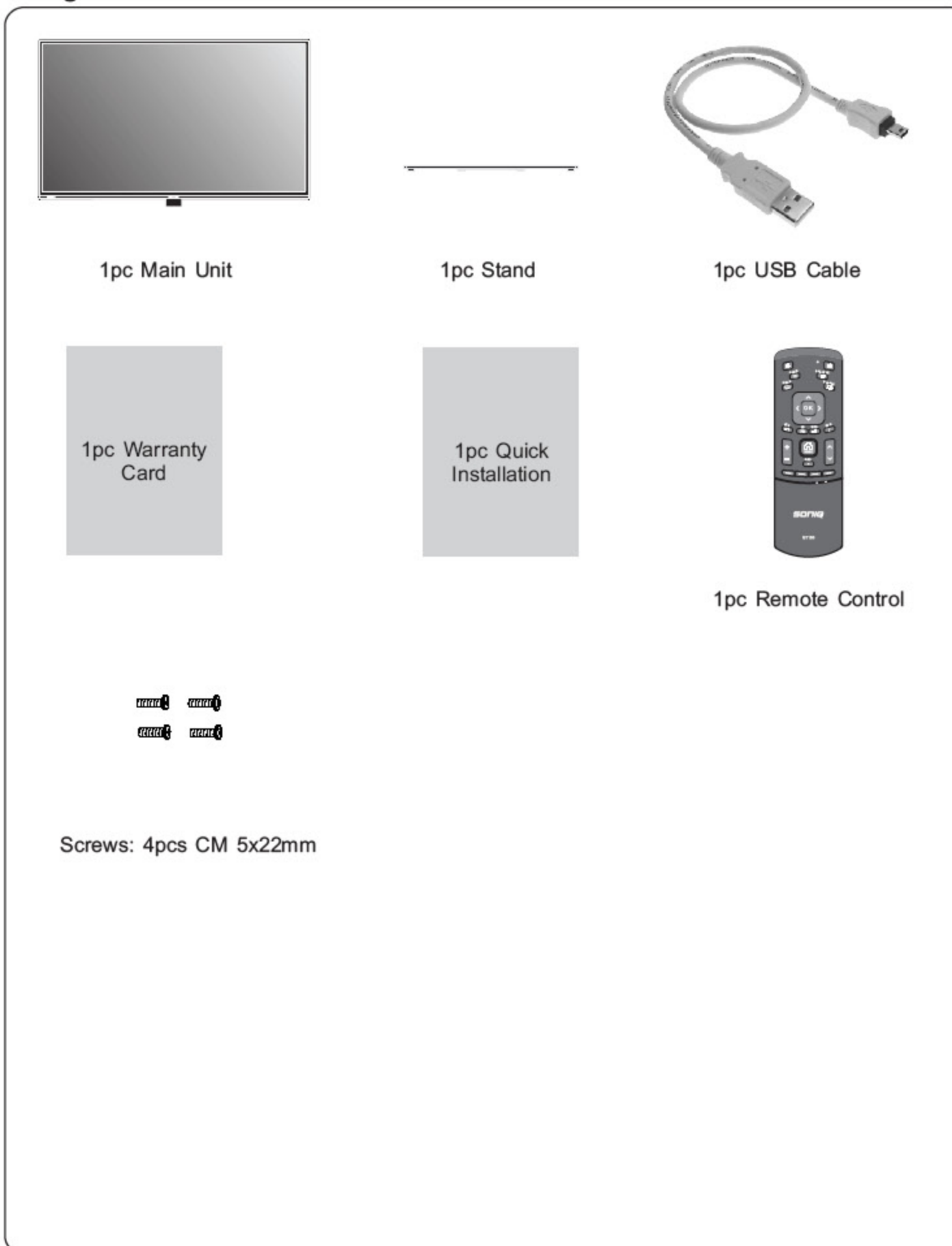
For specific operation instruction, please refer to the Instruction Manual.

1. Press HOME button to visit the HOME page.
2. Select the Instruction Manual at the bottom of the application menu.
Press OK button or LEFT MOUSE button to view the Instruction Manual.



6

Package Contents



7

Specification

Supported PC Input Signal

Your unit can use as PC monitor, it supports below.

RGB-PC, HDMI/DVI-PC mode INPUT SPEC				
PC/HDMI/1/2/3/4 input				
	Resolution	Horizontal Frequency (KHz)	Vertical Frequency (Hz)	Standard
INPUT FORMAT	640 X 480	31.5	60	VGA
	640 X 480	37.861	72.809	VESA
	640 X 480	37.5	75	VESA
	720 X 400	31.5	70	VGA-T
	800 X 600	37.9	60	VESA Guidelines
	800 X 600	48.077	72.19	VESA
	800 X 600	46.9	75	VESA
	832 X 624	49.7	75	Mac
	1024 X 768	48.4	60	VESA Guidelines
	1024 X 768	60	75	VESA
	1125 X 870	68.68	75	Mac
	1280 X 800	47.8	59.8	----
	1280 X 960	60.0	60	VESA
	1360 X 768	47.7	60	VESA
	1280 X 1024	63.595	60	VESA
	1440 X 900	55.9	59.9	VESA
	1680 X 1050	65.3	60	----
	1920 X 1080 (RGB-PC)	66.587	59.93	VESA
	1920 X 1080 (HDMI-PC)	67.5	60	VESA
	3840 X 2160 (HDMI-PC)	67.5	30	----

8

Power Source	~100-240V AC, 50/60Hz	
Power Consumption	95W	
Video Format Supporting	COMPONENT	480i, 480p, 576i, 576p, 720p (50/60Hz), 1080i (50/60Hz), 1080p (50/60Hz)
	HDMI	480p, 576p, 720p (50/60Hz), 1080i (50/60Hz), 1080 (50/60Hz).
Analog TV	TV System	PAL B/G; D/K; I
Digital TV	Programme Coverage	Australia VHF-H 177.5 to 226.5MHz UHF 522.5MHz to 816.5MHz
	Channel Bandwidth	7MHz
	Video Decode	1080i, 720p, 576p, 576i
	Audio	MPEG-1;MPEG-2;AC-3
Panel Spec	Effective Display Area	919.296 (H) x 517.104 (V)
	Panel Native Resolution	3840 x 2160 pixels
	Brightness	350cd/m ²
	Contrast Ratio	5000 : 1
	Color Depth	8-bit+FRC , 1.07G colors
	Expectation of Life	around 30,000 hours
Input/Output	ANT IN	ANT IN X 1
	HDMI IN	HDMI X 3
	USB IN	USB X 2
	VGA IN	VGA X 1
	VGA AUDIO IN	VGA AUDIO IN X 1
	Component IN	Component IN X 1
	Digital Audio Out (Optical)	Digital Audio Optical Out X 1
	Y Pb Pr IN	Y Pb Pr IN X1
	LAN	Rj45 X 1
	SD CARD	Micro SD X 1
Wireless LAN Specification	AV Out	VIDEO X 1
	Standard	IEEE802.11 802.11b/g/n
	Frequency Band	2.4~2.4835 GHz ISM Band 3
	Output Power	<13dBm@11n, <18dBm@11b, <14dBm@11g
Audio Power	8W + 8W	
Unit Dimension	952(L) x 220(W) x 600 (H)mm	

9

SONIQ

42"UltraHD LED LCD Smart TV

U42V14B-AU



QUICK REFERENCE GUIDE

Thank you for purchasing the unit.
Your unit integrates digital and analog tuner in the same unit.