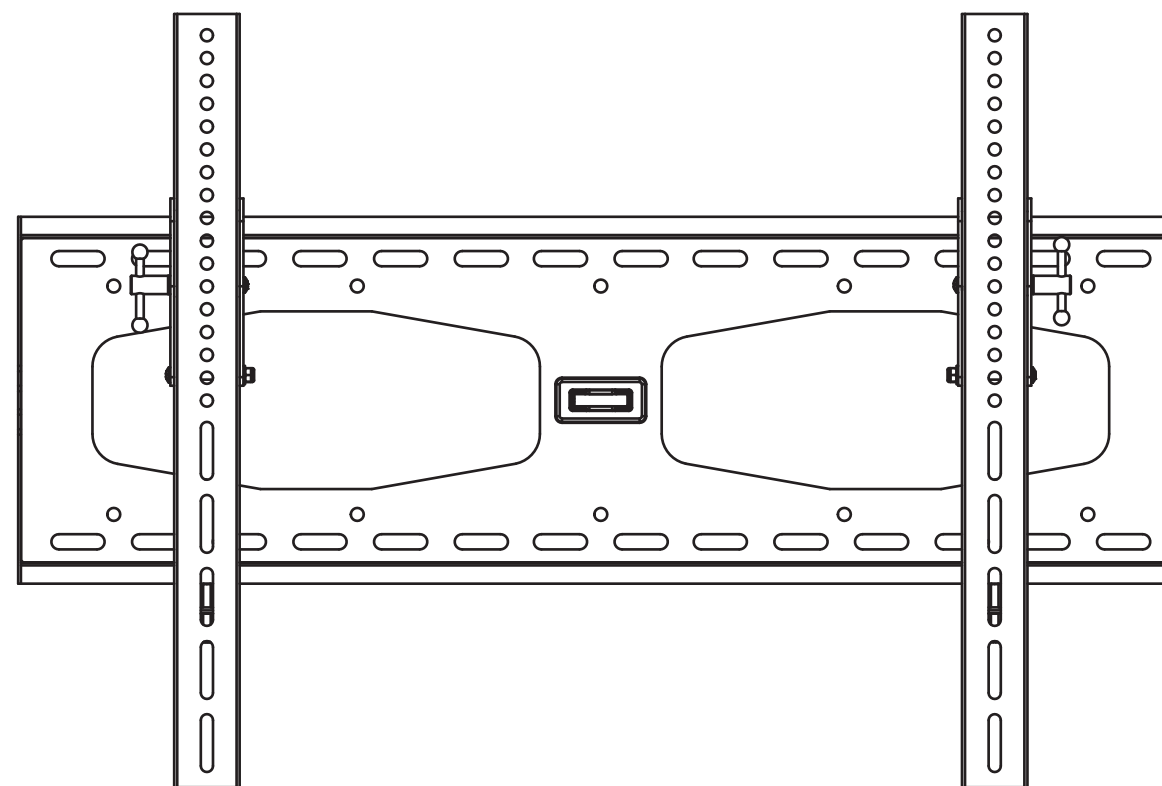


SONIQ

SONIQ

ADJUSTABLE FLAT PANEL WALL MOUNT
AWM3010



This product is designed to mount flat panel televisions weighing up to 143lbs/75kgs to a vertical wall with maximum flat panel wall mount installing hole dimensions 71cm(width) x 48cm(height).It allows you to effortlessly tilt your new television up or down without using tools.

Before installing our wall mount prouduct,please make sure your unit installing hole dimensions is covered in product maximum supported range.

Safety Warning:

Be careful to make sure there are no missing or defective parts.

Never use defective parts.

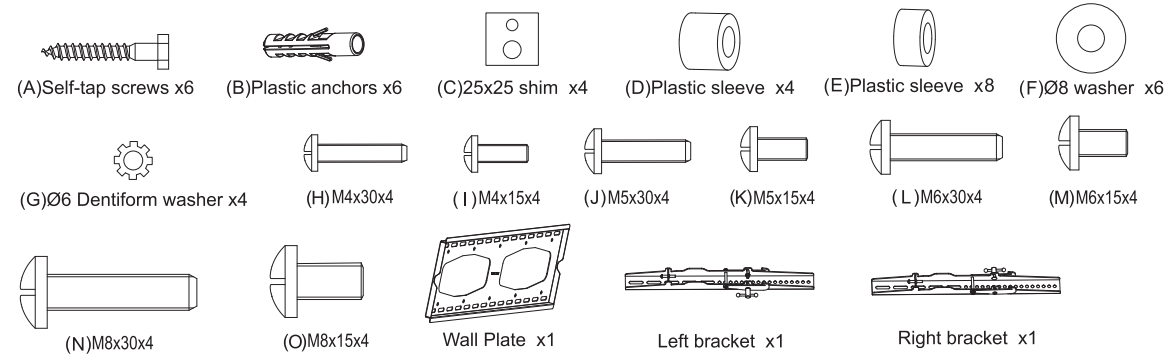
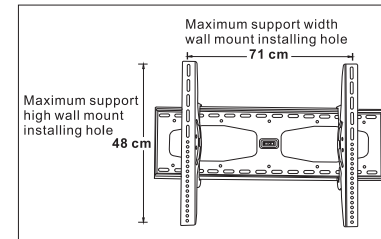
Improper installation may cause damage or serious injury.

Note the included hardware is for mounting on walls with wood stud construction.

If you are uncertain about the nature of your wall,consult an expert.

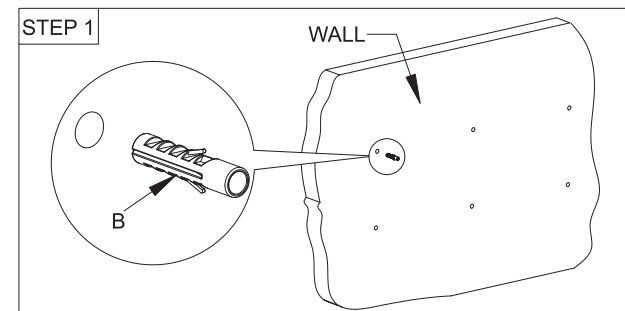
Please consult your hardware or installation professional for proper mounting to other types or walls.

The supplied hardware is not for steel.



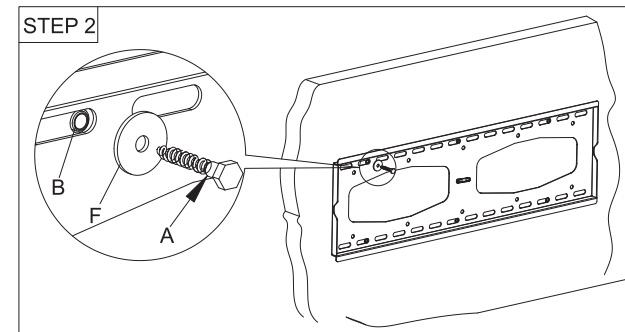
Installation and operation instructions

Note:please read the instructions carefully before installation!



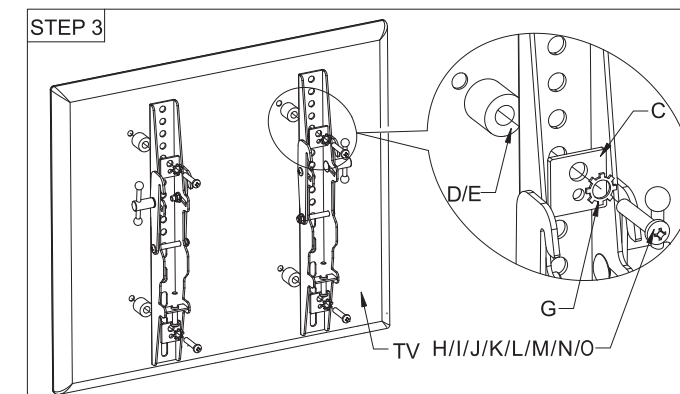
Step 1:

Use the wall plate as a templet to drill six holes of 10mm diameter and 50mm depth in the concrete wall.Then wedge six plastic anchors into the holes.



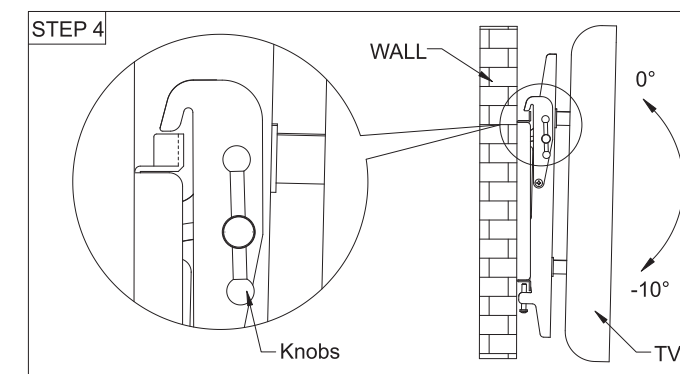
Step 2:

Install the wall plate.Put the wall plate on the wall,and then screw six lag bolts into each plastic concrete anchor through metal washer to fix the lag bolt,the plastic concrete anchor and the wall.



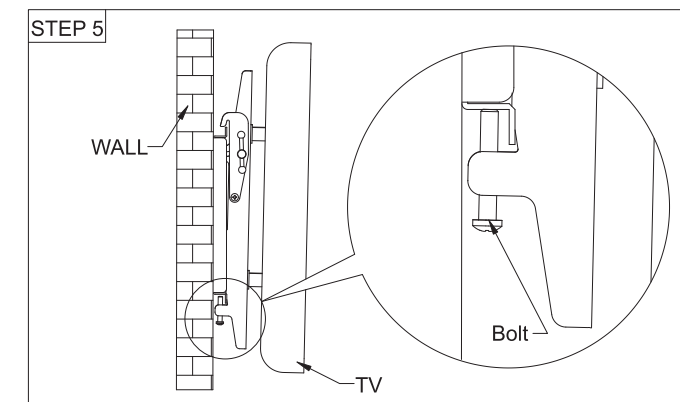
Step 3:

Install the monitor brackets onto the back of the panel TV:each monitor bracket should be fixed with two screws, H/I/J/K/L/M/N/O.And the distance from two brackets to the top of the panel TV should be equal and the position of the brackets should be at as center as possible.The knob shall face outward from the panel TV.The parts shall be selected according to the dimensions of the holes in the back of the panel TV.



Step 4:

Hang the two monitor brackets on the wall plate.Loosen hands until hung firmly.The knobs should be loosened before adjust the angle of view for the flat panel TV between 0°~ -10° ,After the position has been determined,the knobs in two sides of it should be screwed down furthest.



Step 5:

There is a bolt under each monitor bracket.Screw it at the lowest position before installation.After the orientation of TV panel has been determined and the knobs have been screwed down furthest,re-screw it to fix the monitor brackets with the wall plate.

Notes

- (1)Choose the right place to install wall plate.The bracket must be installed on solid concrete wall.Make sure the wall can support 300kg weights up.
- (2)Users should check and maintain the product frequently according to the use status to ensure the flat panel TV works normally,safely and securely. Please wipe joining parts with a dry cloth frequently.Don't use it in rain or in moist environment. Please check once two months if all bolts are secure or not.