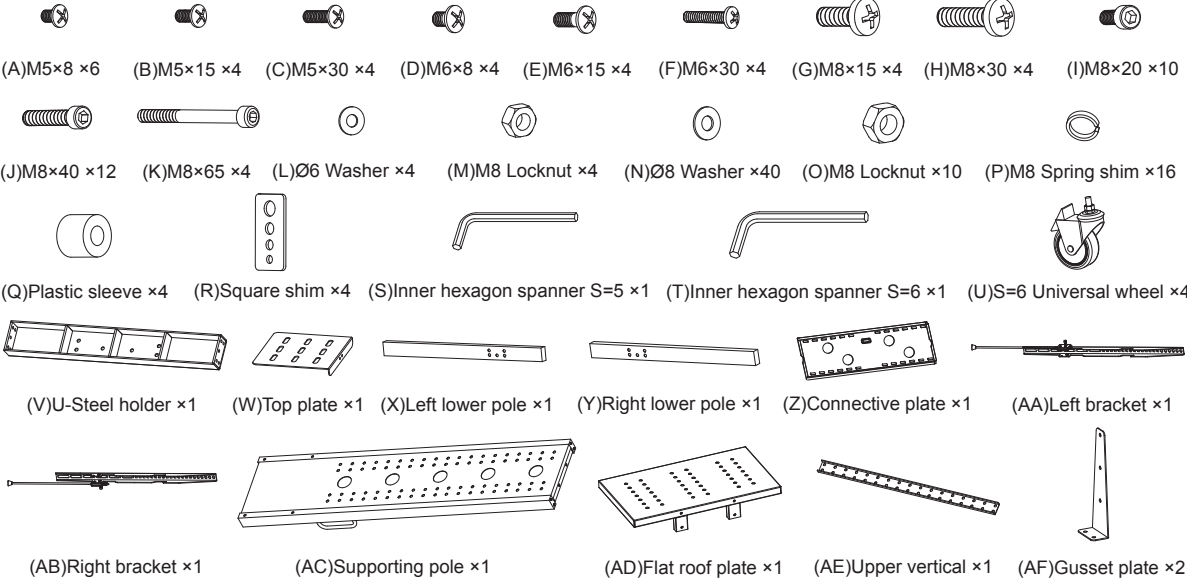
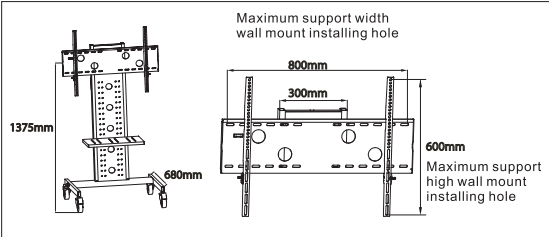


Mobile Floor Stand Installation for Panel TV

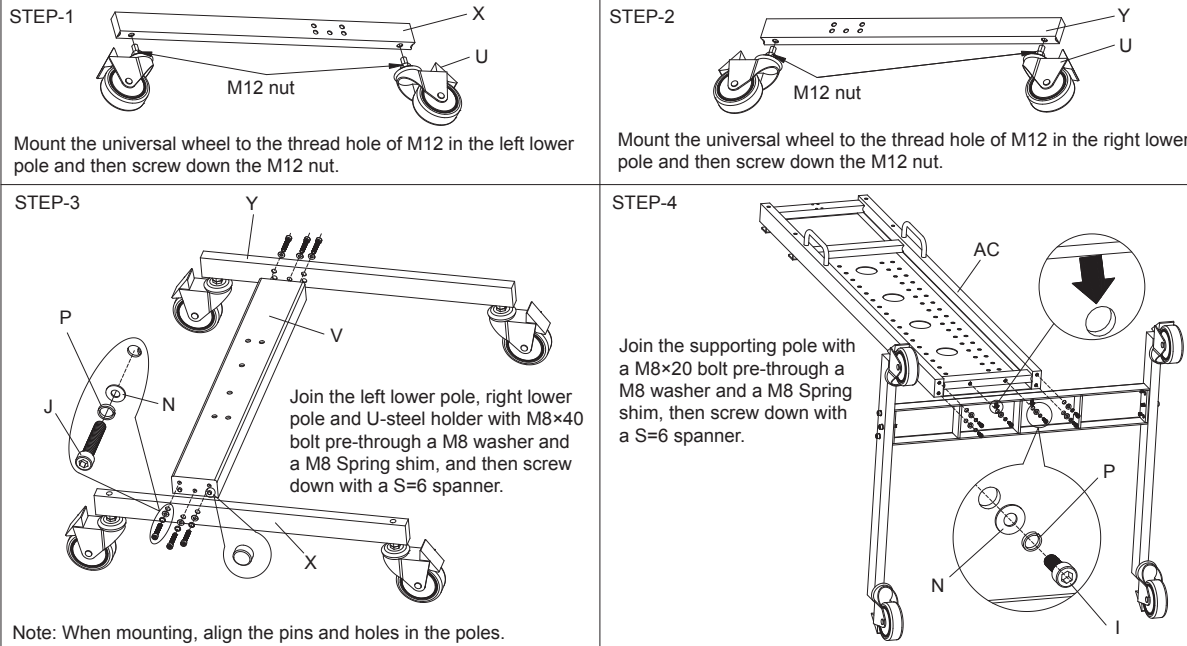
This product is designed to mount flat panel televisions weighing up to 132lbs/60kgs with maximum flat panel mount installing hole dimensions 80 cm(width) × 60 cm(height). It allows you to effortlessly tilt your new television up or down without using tools.

Before installing the mobile TV floor stand product, please make sure your unit installing holes are well-prepared

Safety Warning:
Be careful to make sure there are no missing or defective parts.
Never use defective parts.
Improper installation may cause damage or serious injury.



3.Installation and operation instructions
Note:please read the instructions carefully before installation!



Mobile Floor Stand Installation for Panel TV

