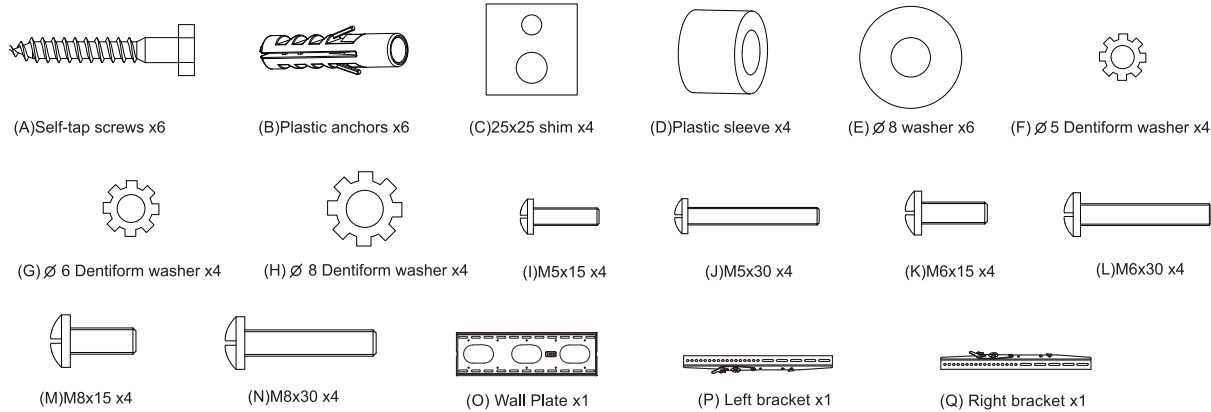
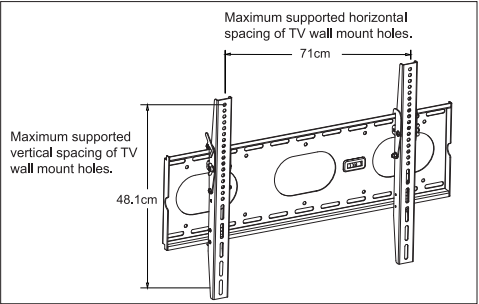


Wall Fixed Installation for Panel TV

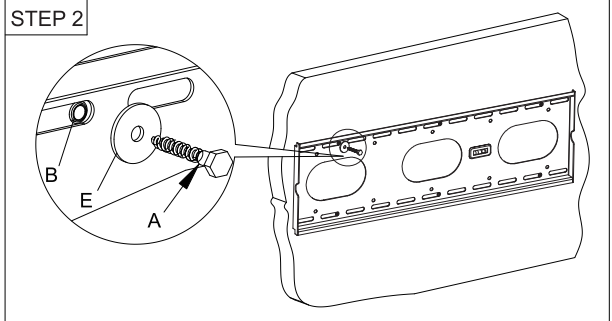
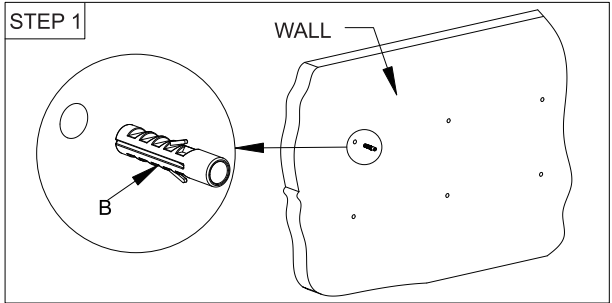
This product is designed to mount flat panel televisions weighing up to 165lbs/75kgs to a vertical wall with maximum flat panel wall mount installing hole dimensions 71cm(width) x 48.1cm(height).It allows you to effortlessly tilt your television up or down without tools.

Before installing the wall mount product, please make sure your unit installing holes are well-prepared.

Safety Warning:
Never use defective parts.
Improper installation may cause damage or serious injury.
Note the included hardware is for mounting on walls with wood stud construction.
If you are uncertain about the nature of your wall,consult an expert for proper installation.



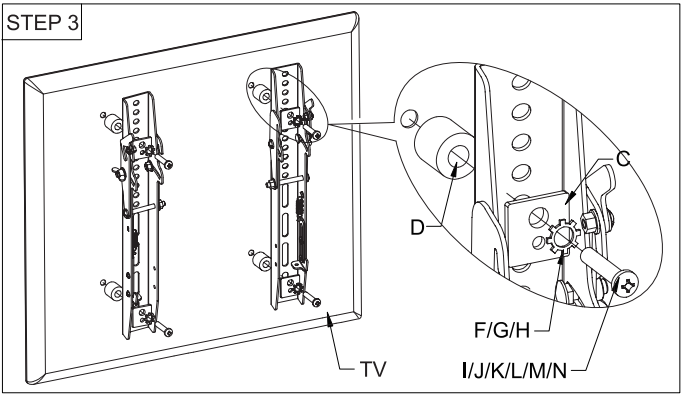
3.Installation and operation instructions
Note:please read the instructions carefully before installation!



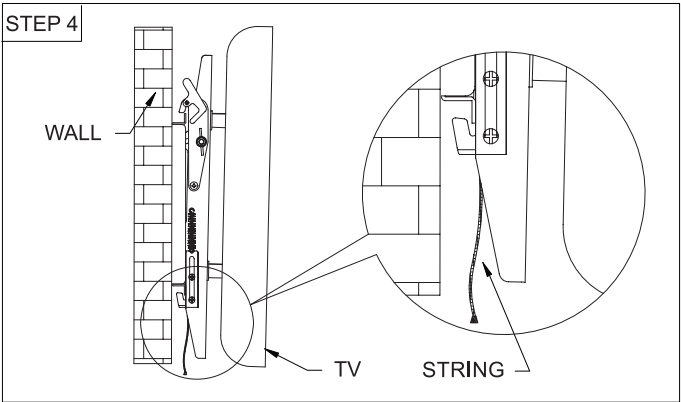
Step 1:
Take the wall plate (O) as a base and drill six holes of 10mm(diameter) x 50mm(depth) in the concrete wall, Then wedge six plastic anchors (B) into the wall holes.

Step 2:
Install the wall plate. Mount the wall plate (O) on the wall by screwing six lag bolts (A) into each concrete anchor (B) through metal washer (E). (see left)

Wall Fixed Installation for Panel TV

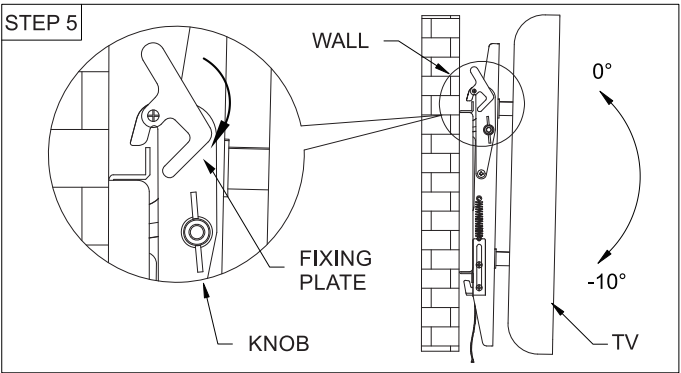


Step 3:
Install the brackets (P/Q) onto the back of the panel TV (See left). Make sure the distance from each bracket to the top of the panel TV is equal and also as center as possible. Choose the right washers (F/G/H) & bolts (I/J/K/L/M/N) according to the dimensions of the holes' in the back of panel TV.



Step 4:
Hang the two brackets on the wall plate. Don't leave go until they are located tightly. Draw the rope to hook the brackets onto the wall plate. Loosen the wrench on both sides of the brackets to adjust the TV monitor angle between 0° ~ 10° to a suitable position, and then tighten up the wrench.

Remarks: Hide the rope behind the TV to avoid the Children's playing



Step 5:
Push the fixing plate into the wall plate.

Remarks:
A.Installed by the professional only.
B.Installed on the hard wall or pillar.