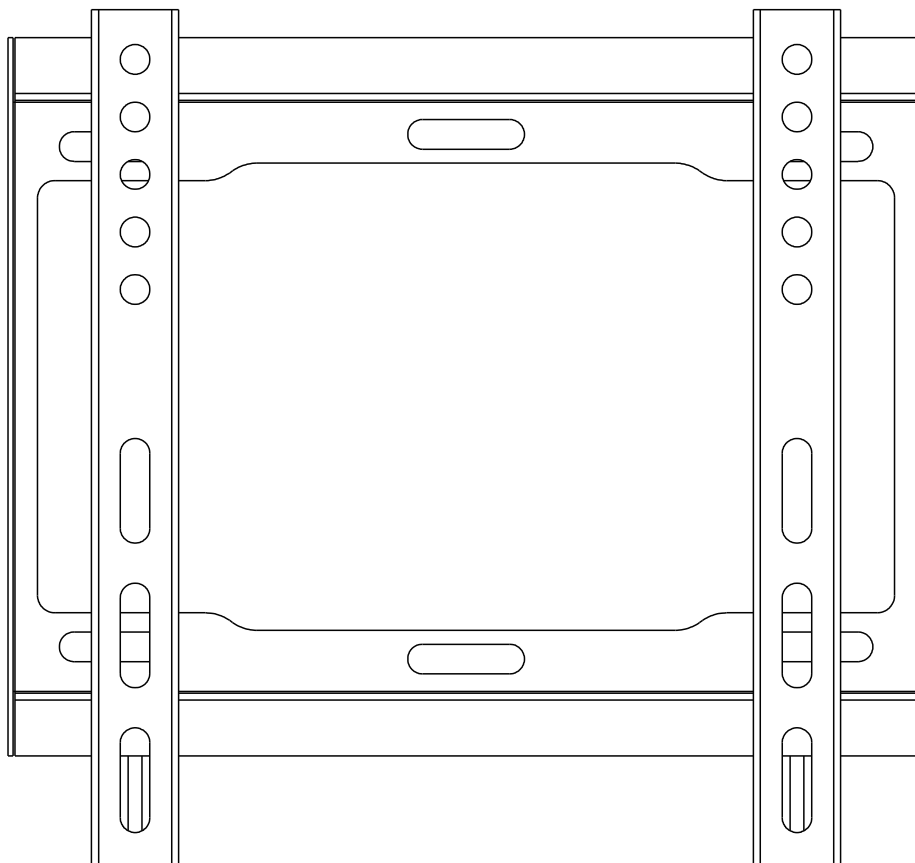




Instruction Manual



Fixed Flat Panel Wall Mount

AWM2302

NOTE: Read the entire instruction manual before installing and assembling.

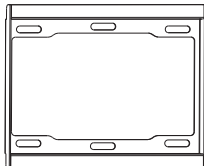
WARNING

- This mounting bracket was designed to be installed and utilised ONLY as specified in this manual. Improper installation of this product may cause damage or serious injury.
- Any person installing this product must have at least a minimum level of building and constructing knowledge.
- Make sure that the supporting surface will safely support the combined weight of the equipment and all attached hardware and components.
- Always use an assistant or mechanical lifting equipment to safely lift and position the equipment.
- Tighten screws firmly, but do not over tighten. Over tightening can cause damage to the items, This greatly reduces their holding power.
- This product is intended for indoor use only. Using this product outdoors could lead to product failure and personal injury.

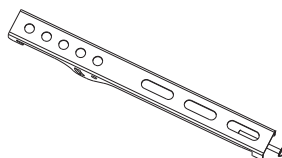
The installer must be fully aware of the position of any electrical wiring, plumbing or other typical building construction materials that may be hidden in the wall where this bracket is intended to be installed. Drilling into or contact with an unknown space can result in being electrocuted and possible death or damage to the building structure or amenities.

Component Checklist

IMPORTANT: Ensure that you have received all parts according to the component checklist prior to installation. If any parts are missing or faulty, telephone your local distributor for a replacement.



wall plate(x1)
A

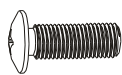


adaptor bracket(x2)
B

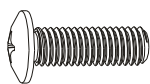


bubble level(x1)
C

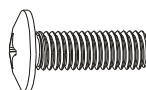
Package M



M4x12 BM(x4)
M-A



M5x12 BM(x4)
M-B

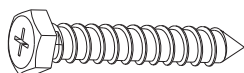


M6x12 BM(x4)
M-C

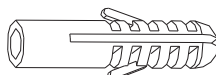


D5 washer(x4)
Ø5.2xØ10x1mm
M-D

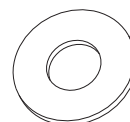
Package W



ST6.3x55(x4)
W-A

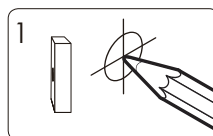
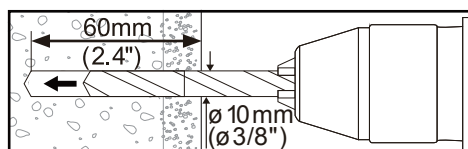
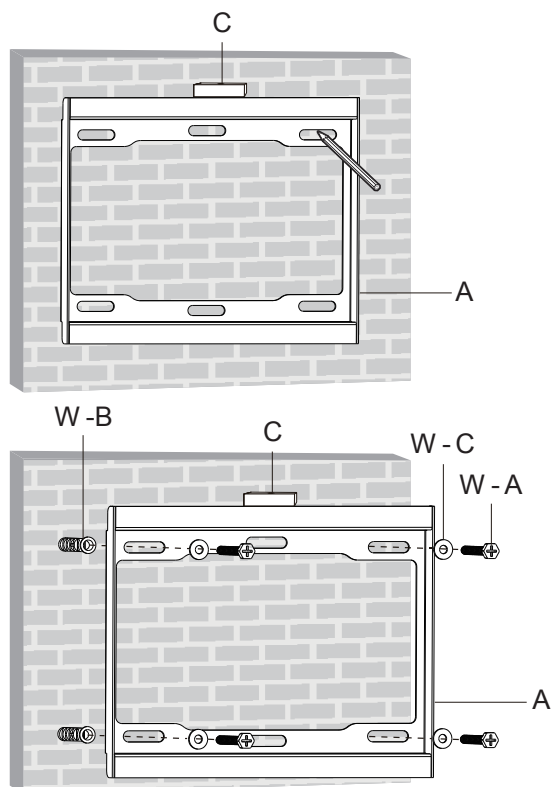


concrete anchor(x4)
W-B

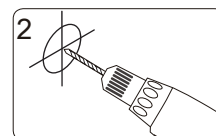


D6 washer(x8)
Ø6.5xØ16x1.6mm
W-C

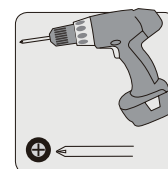
1. Solid Brick and Concrete Mounting



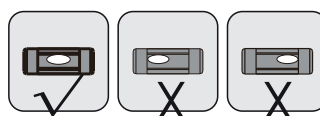
Mark the exact location of mounting holes



Drill pilot holes



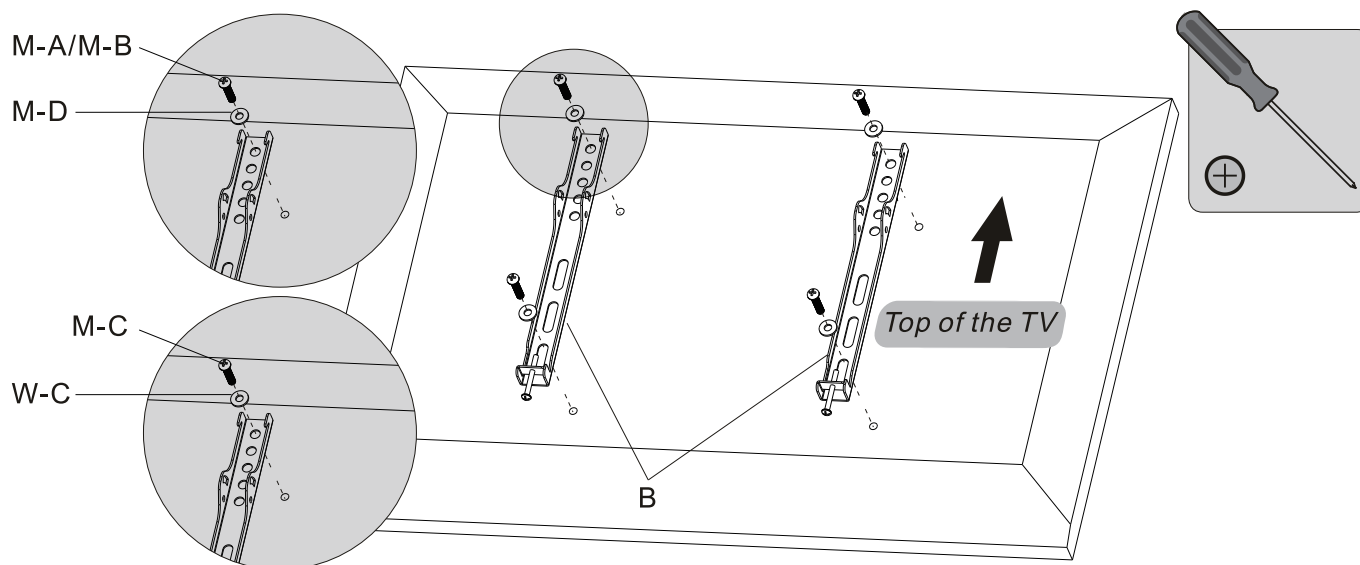
Screw the wall plate onto the wall



⚠ WARNING

Installers must verify that the supporting surface will safely support the combined weight of the equipment and all attached hardware and components.

2. Install the Adaptor Brackets

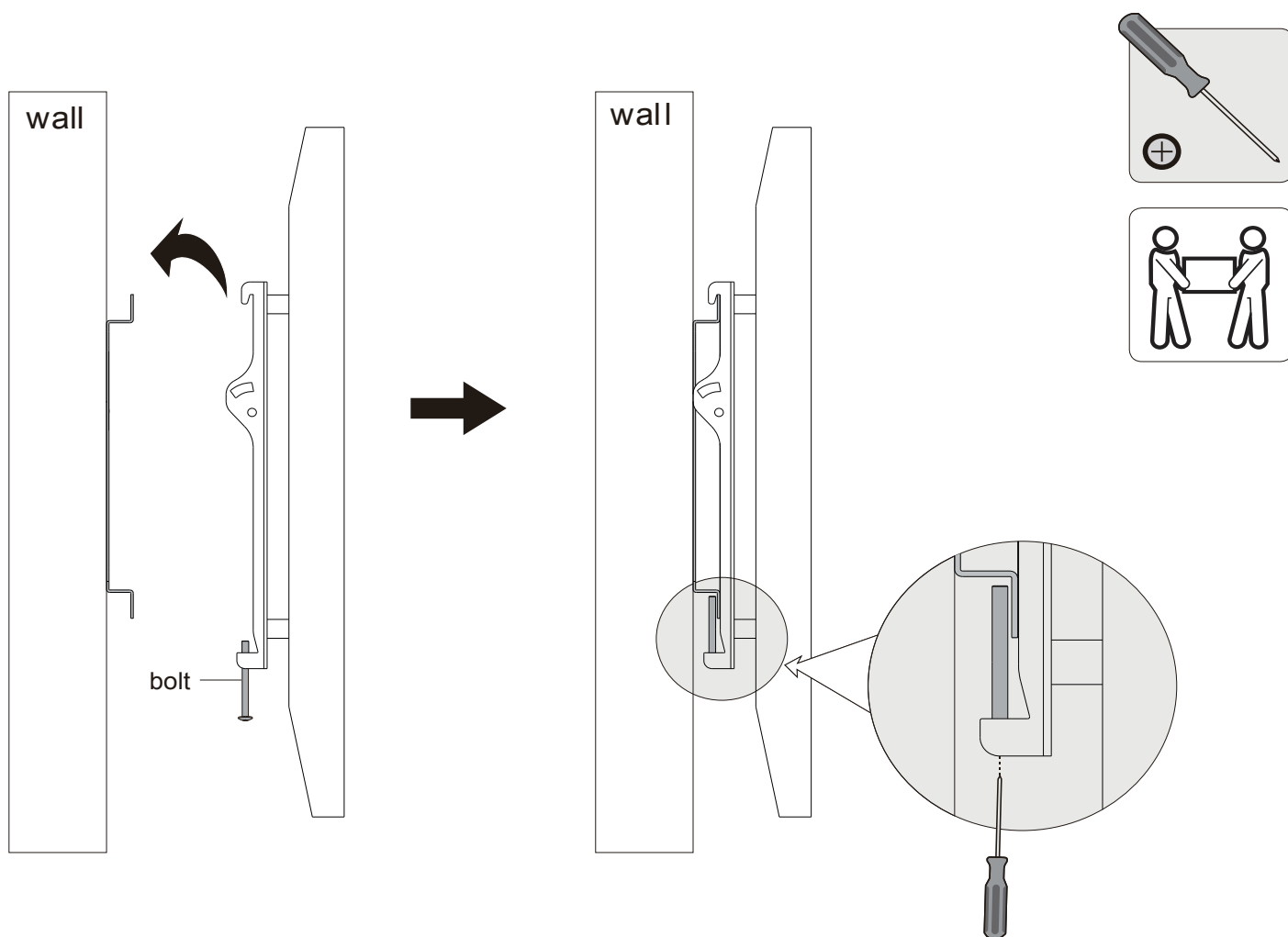


Note: Choose the appropriate screws, washers and spacers (if necessary) according to the type of screen.

- Position the adaptor brackets as close as possible to the center of the TV.
- Screw the adaptor brackets onto the TV.

⚠ Tighten all screws but do not over tighten.

3. Hang the TV onto the Wall Plate



Tighten the bottom bolts to secure the adaptor brackets to the wall plate firmly.

Maintenance

- Check that the bracket is secure and safe to use at regular intervals(at least every three months).
- Please contact your dealer if you have any questions.



CAUTION: DO NOT EXCEED RATED LISTED WEIGHT CAPACITY. SERIOUS INJURY OR PROPERTY DAMAGE MAY OCCUR!

AWM2302



75x75
100x100
200x100
200x200



HOTLINE

- AUSTRALIA : 1300 765 663
- NEW ZEALAND : 0800 100 236